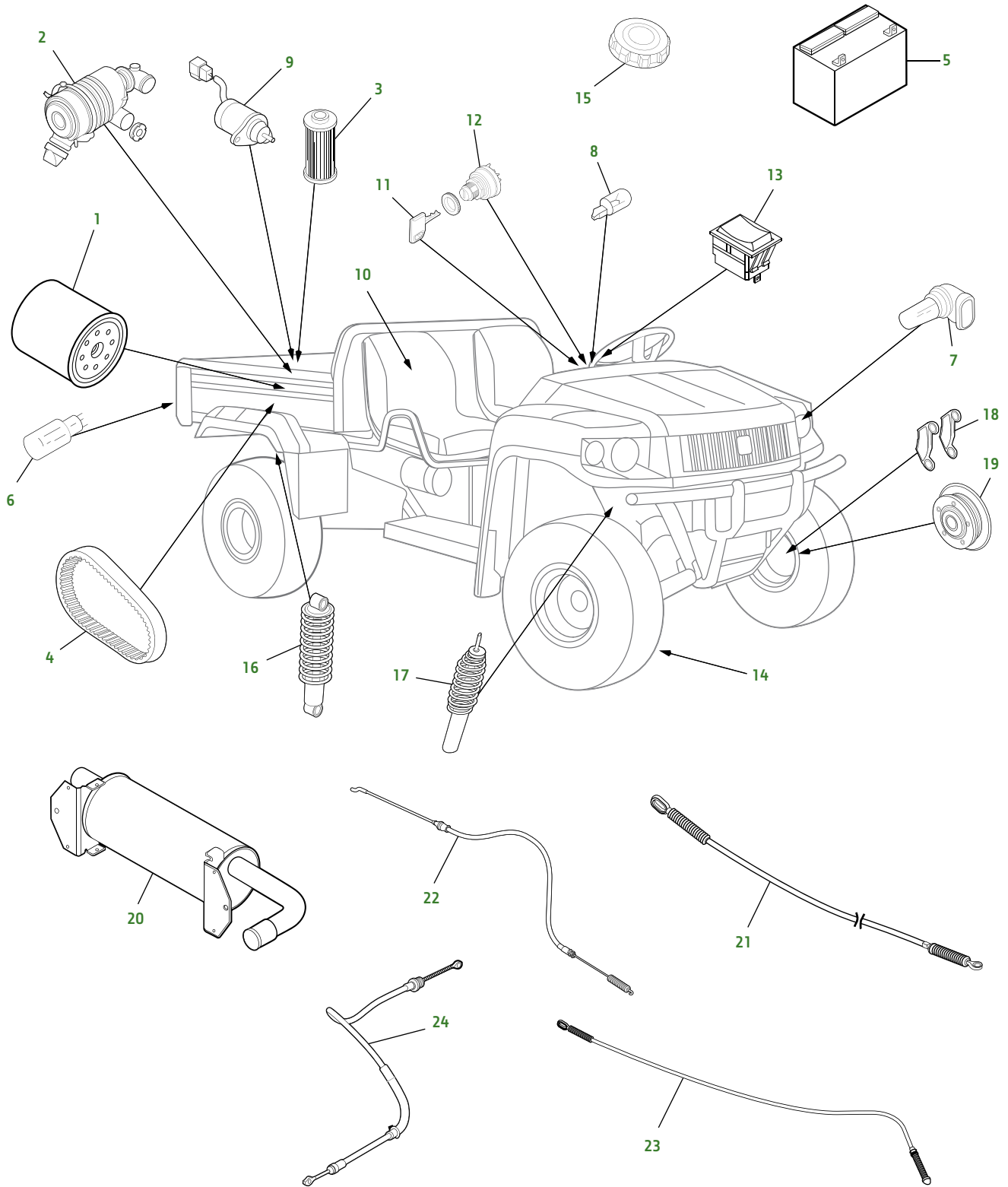


# Gator 855D XUV 4X4 (Camo, Green & Yellow, Olive & Black)



## Gator 855D XUV 4X4 (Camo, Green &amp; Yellow, Olive &amp; Black)

Key	Part No.	Description	Key	Part No.	Description
1	<a href="#">M806418</a>	OIL FILTER	15	<a href="#">AM146278</a>	FILLER CAP
2	<a href="#">M113621</a>	AIR FILTER ELEMENT - PRIMARY	16	<a href="#">AM137814</a>	SHOCK - REAR (S/N - 060000)
	<a href="#">M123378</a>	AIR FILTER ELEMENT - SECONDARY		<a href="#">AM142425</a>	SHOCK - REAR (S/N 060001-)
3	<a href="#">M801101</a>	FUEL FILTER ELEMENT		<a href="#">AM140234</a>	SHOCK - PERFORMANCE - REAR
4	<a href="#">M174096</a>	BELT - DRIVE	17	<a href="#">AM137815</a>	SHOCK - FRONT (S/N -060000)
	<a href="#">MIU800679</a>	BELT - FAN		<a href="#">AM142426</a>	SHOCK - FRONT (S/N 060001-)
5	<a href="#">TY25881</a>	BATTERY		<a href="#">AM140232</a>	SHOCK - PERFORMANCE - LEFT FRONT
6	<a href="#">R133302</a>	BULB - DUAL FILAMENT		<a href="#">AM140233</a>	SHOCK - PERFORMANCE - RIGHT FRONT
	<a href="#">R133301</a>	BULB - SINGLE FILAMENT	18	<a href="#">AM140607</a>	BRAKE KIT - FRONT - INCLUDES 4 PADS
	<a href="#">57M10180</a>	BULB - FRONT AMBER		<a href="#">AM141182</a>	BRAKE KIT - REAR - INCLUDES 4 PADS
7	<a href="#">R136239</a>	BULB - HEADLIGHT	19	<a href="#">AM142949</a>	ROTOR
8	<a href="#">AR62407</a>	BULB - INSTRUMENT PANEL	20	<a href="#">AM140802</a>	MUFFLER
9	<a href="#">M806808</a>	FUEL SHUTOFF SOLENOID		<a href="#">M811809</a>	GASKET
10	<a href="#">AM138194</a>	SEAT - YELLOW	21	<a href="#">AM136236</a>	CABLE - THROTTLE
	<a href="#">AM138195</a>	SEAT - BLACK	22	<a href="#">AM141669</a>	CABLE - DIFFERENTIAL LOCK
11	<a href="#">AM131841</a>	KEY	23	<a href="#">AM141668</a>	CABLE - DIFFERENTIAL INTERLOCK
12	<a href="#">TCA22740</a>	IGNITION SWITCH	24	<a href="#">AM144020</a>	CABLE - PARK BRAKE (S/N -080000)
13	<a href="#">VGA10925</a>	ROCKER SWITCH - HEADLIGHT		<a href="#">AM144325</a>	CABLE - PARK BRAKE (S/N 080001-)
14	<a href="#">M158356</a>	TIRE - FRONT — 26 X 9-12 in	25	<a href="#">LG260</a>	HOME MAINTENANCE KIT
	<a href="#">M158357</a>	TIRE - REAR — 26 X 11-12 in			
	<a href="#">M158358</a>	TIRE - FRONT - ALL PURPOSE — 25 X 9-12 in			
	<a href="#">M168567</a>	TIRE - REAR - ALL PURPOSE — 25 X 11-12 in			
	<a href="#">M159741</a>	TIRE - REAR — 27 X 9-14 in			
	<a href="#">M159742</a>	TIRE - REAR — 27 X 11-14 in			

## Parts Needed in First 250 Hours of Operation

Qty	Part No.	Item	Capacity	Interval In Hours
2	<a href="#">M806418</a>	Engine Oil Filter		50/200
1	<a href="#">TY22061</a>	Torq-Gard Supreme Plus-50 Oil	2.3 qt	50/200
3	<a href="#">TY6341</a>	Multi-Purpose SD Polyurea Grease (14 oz)		As Needed

## Frequently Used Items

Qty	Part No.	Item
1	<a href="#">M113621</a>	Air Filter - Primary
1	<a href="#">M123378</a>	Air Filter - Secondary
1	<a href="#">M801101</a>	Fuel Filter
1	<a href="#">M174096</a>	Belt - Drive (4WD)
1	<a href="#">MIU800679</a>	Belt - Fan
1	<a href="#">AM131841</a>	Key
1	<a href="#">AM146278</a>	Filler Cap
1	<a href="#">TY26183</a>	Grease Gun