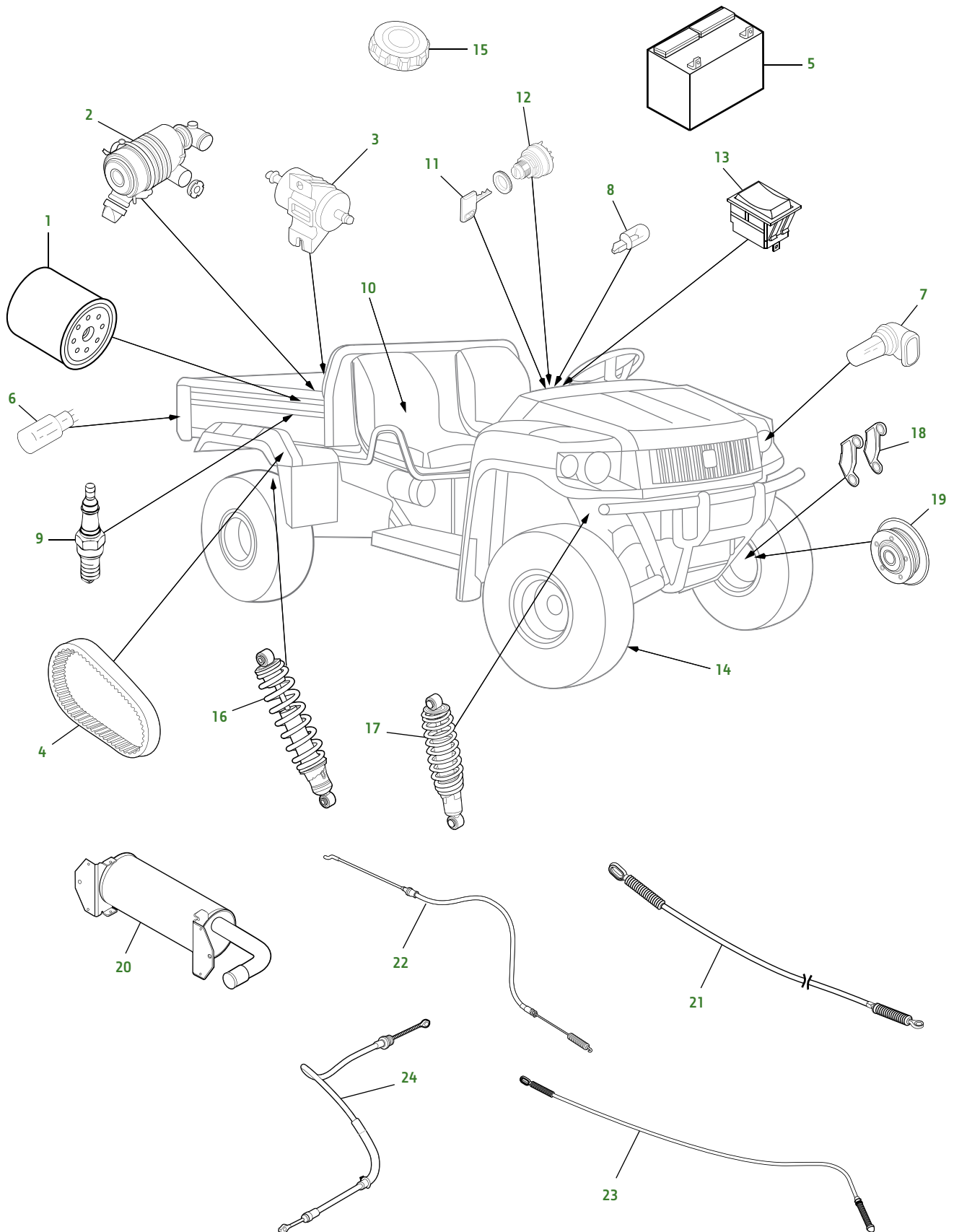


# Gator 825i XUV 4X4 (Camo, Green & Yellow, Olive & Black)

Utility Vehicles



## Gator 825i XUV 4X4 (Camo, Green &amp; Yellow, Olive &amp; Black)

Key	Part No.	Description	Key	Part No.	Description
1	<a href="#">AM107423</a>	OIL FILTER	13	<a href="#">VGA10925</a>	ROCKER SWITCH - HEADLIGHT
2	<a href="#">M113621</a>	AIR FILTER ELEMENT - PRIMARY	14	<a href="#">M158356</a>	TIRE - FRONT - 26 X 9-12
	<a href="#">M123378</a>	AIR FILTER ELEMENT - SECONDARY		<a href="#">M159741</a>	TIRE - FRONT - SPORT - 27 X 9-14
3	<a href="#">AM117584</a>	FUEL FILTER - IN LINE		<a href="#">M158358</a>	TIRE - FRONT - 4 PLY - 25X 9-12
4	<a href="#">M174096</a>	BELT-DRIVE		<a href="#">M158357</a>	TIRE - REAR - 27 X 11-12
	<a href="#">MIU13191</a>	BELT - ALTERNATOR (S/N -060000)		<a href="#">M159742</a>	TIRE - REAR - SPORT - 27X 11-14
	<a href="#">MIU13962</a>	BELT - ALTERNATOR (S/N 060001-)		<a href="#">M168567</a>	TIRE - REAR - 6 PLY - 25 X 11-12
	<a href="#">MIU12499</a>	BELT - TIMING	15	<a href="#">VGA10167</a>	FILLER CAP
5	<a href="#">TY25881</a>	BATTERY	16	<a href="#">AM137814</a>	SHOCK - REAR (S/N -060000)
6	<a href="#">R133302</a>	BULB - BRAKE LIGHT		<a href="#">AM142425</a>	SHOCK - REAR (S/N 060001-)
	<a href="#">R133301</a>	BULB - TAIL LIGHT		<a href="#">AM137815</a>	SHOCK - REAR (S/N -030000)
	<a href="#">AM133169</a>	BULB - FRONT TURN SIGNAL		<a href="#">AM142426</a>	SHOCK - REAR (S/N 030001-)
	<a href="#">57M10180</a>	BULB - FRONT AMBER	17	<a href="#">AM137815</a>	SHOCK - FRONT (S/N -030000)
7	<a href="#">R136239</a>	BULB -HEADLIGHT		<a href="#">AM142426</a>	SHOCK - FRONT (S/N 030001-)
8	<a href="#">AR62407</a>	BULB - INSTRUMENT PANEL	18	<a href="#">AM140607</a>	BRAKE KIT - FRONT - INCLUDES 4 PADS
9	<a href="#">MIU12783</a>	SPARK PLUG		<a href="#">AM141182</a>	BRAKE KIT - REAR - INCLUDES 4 PADS
10	<a href="#">AM138194</a>	SEAT - YELLOW	19	<a href="#">AM142949</a>	ROTOR
	<a href="#">AM138195</a>	SEAT - BLACK	20	<a href="#">AM140438</a>	MUFFLER
11	<a href="#">AM131841</a>	KEY		<a href="#">MIU13126</a>	GASKET
12	<a href="#">TCA22740</a>	IGNITION SWITCH		<a href="#">BM22916</a>	MUFFLER - SPORT
			21	<a href="#">AM144986</a>	CABLE - THROTTLE
			22	<a href="#">AM141669</a>	CABLE - DIFFERENTIAL LOCK
			23	<a href="#">AM141668</a>	CABLE - DIFFERENTIAL INTERLOCK
			24	<a href="#">AM144020</a>	CABLE - PARK BRAKE

## Parts Needed in First 250 Hours of Operation

Qty	Part No.	Item	Capacity	Interval In Hours
3	<a href="#">AM107423</a>	Engine Oil Filter		8/100/200
5	<a href="#">TY6364</a>	1 qt Plus 4 10W30 Engine Oil	2.3 qt (2.2 L)	8/100/200
1	<a href="#">M113621</a>	Air Filter		200
1	<a href="#">AM117584</a>	Fuel Filter		200
3	<a href="#">TY6341</a>	Multi-Purpose SD Polyurea Grease (14 oz)		As Needed

## Frequently Used Items

Qty	Part No.	Item
1	<a href="#">M113621</a>	Air Cleaner
1	<a href="#">AM117584</a>	Fuel Filter
3	<a href="#">MIU12783</a>	Spark Plug
1	<a href="#">M174096</a>	Belt - Drive
1	<a href="#">MIU13191</a>	Belt - Fan
1	<a href="#">MIU12499</a>	Belt - Timing
1	<a href="#">AM131841</a>	Key
1	<a href="#">VGA10167</a>	Filler Cap
1	<a href="#">TY26183</a>	Grease Gun