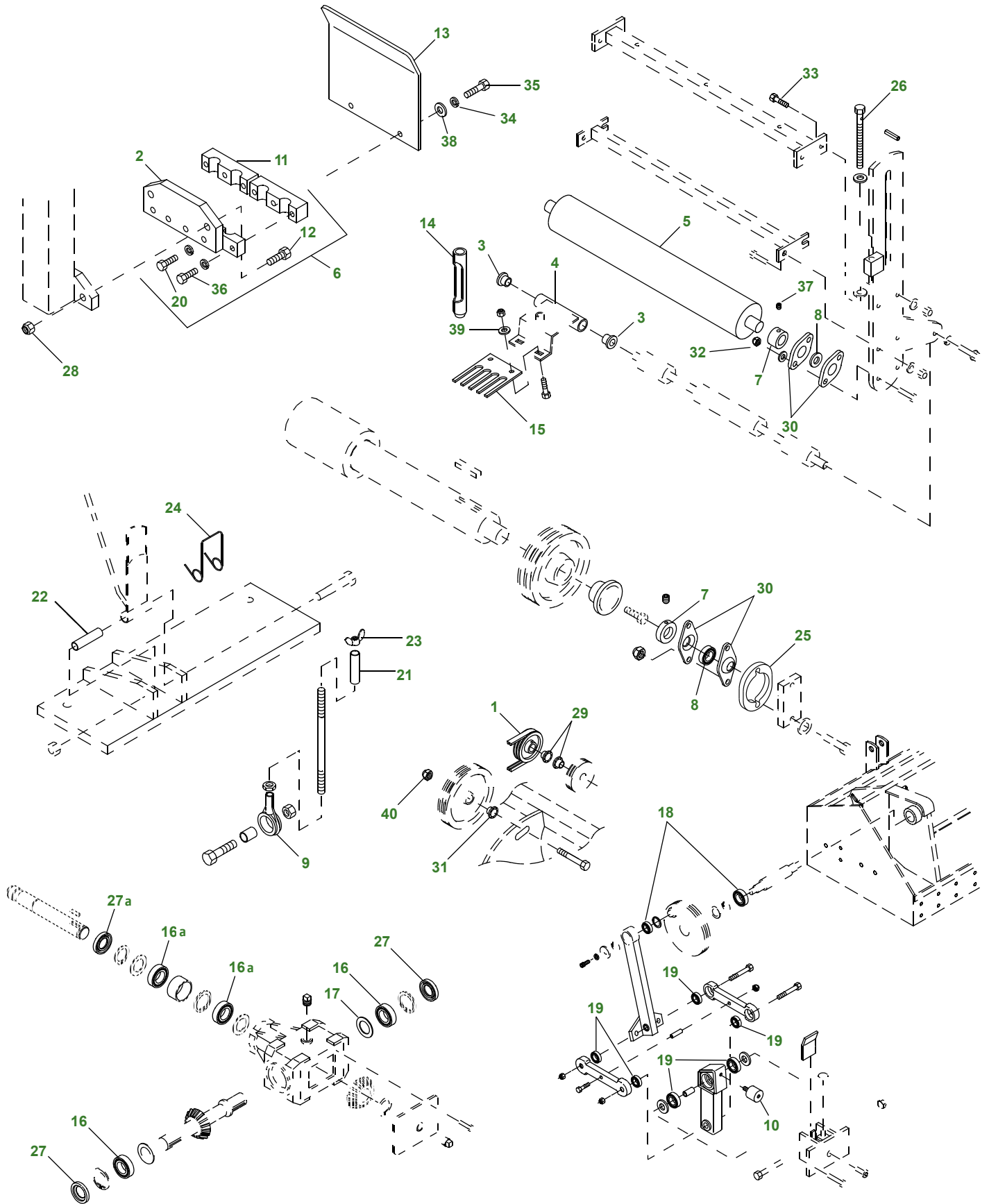


1000 / 1500 / 2000 Aercore™ Aerator



Aeration & Debris Maintenance

1000 / 1500 / 2000 Aercore™ Aerator (Continued)

Key	Part No.	Description	Key	Part No.	Description
1	MT3040	BELT	17	WP39013	SHIM
2	AMT1566	HOLDER (4 X .75 in.) (B)	18	MT3065	BALL BEARING
	AMT1567	HOLDER (4 X .88 in.) (A)	19	MT3069	BALL BEARING
	AMT1568	HOLDER (3 X .75 in.) (B)	20	19H3130	CAP SCREW
	AMT1569	HOLDER (3 X .88 in.) (A)	21	MT3182	SLEEVE (FOR 855 & 955 TRACTORS)
3	MT3100	BEARING - NYLON		TCU51161	STOP (FOR 4000 SERIES TRACTORS)
4	AMT1588	PIVOT (C); (D) (S/N -030000)	22	MT3183	BUSHING
	AMT2538	PIVOT (D) (S/N 030001-); (E)	23	MT3186	WING NUT
5	AMT1590	ROLLER (D) (S/N -030000)	24	MT3188	EXTENSION SPRING
	AMT1696	ROLLER (C) (S/N -030000)			(FOR 855 & 955 TRACTORS)
	AMT2532	ROLLER (D) (S/N 030001-)		TCU51162	EXTENSION SPRING
	AMT2534	ROLLER (C) (S/N 030001-)			(FOR 4000 SERIES TRACTORS)
	TCA51336	ROLLER (E)	25	MT3317	SPACER
6	AMT1595	HOLDER (1000/1500) (B)	26	MT3321	SCREW (C) (D) (S/N -050000); (E)
	AMT1611	HOLDER (A)			(S/N -020000)
	AMT1612	HOLDER (B)		TCA14546	ROD (C) (D) (S/N 050001-); (E)
	AMT1613	HOLDER (A)			(S/N 020001-)
7	JD8544	LOCKING COLLAR	27	M72979	SEAL (2) OUTPUT SHAFT
8	JD8545	BALL BEARING	27a	TCA21016	SEAL - INPUT SHAFT
9	MT239	TIE ROD END (FOR 855 & 955 TRACTORS)	28	MT3395	LOCK NUT
	TCU51160	ARM (FOR 4000 SERIES TRACTORS)	29	MT3055	BUSHING
10	MT2947	BUMPER (S/N -101000)	30	N120535	FLANGE HOUSING
	TCA23605	BUMPER (S/N 101001-)	31	MT3064	BUSHING
11	MT2948	BAR (4 X .75 in.)	32	T11234	LOCK NUT
	MT2949	BAR (4 X .88 in.)	33	03H1558	BOLT
	MT2950	BAR (3 X .75 in.)	34	12H303	LOCK WASHER
	MT2951	BAR (3 X .88 in.)	35	19H1905	CAP SCREW
12	MT2952	SCREW	36	19H3552	CAP SCREW
13	MT2953	DEFLECTOR	37	22H775	SET SCREW
14		TINE - SEE TINE CHART	38	24H1136	WASHER
15	TCU51059	GUARD - 3X INSIDE (C,D,E)	39	24H1307	WASHER
	TCU51060	GUARD - 3X OUTSIDE (C,D,E)	40.	E54809	LOCK NUT
	TCU51890	GUARD - 3X INSIDE (D,E) (LONG)			
	TCU51061	GUARD - 4X INSIDE (C,D,E)			
	TCU51062	GUARD 4X OUTSIDE (C,D,E)			
	TCU51886	GUARD 4X INSIDE (D,E)			
16	MT3048	BALL BEARING (2) - INPUT SHAFT			
16a	MT3054	BALL BEARING (2) - OUTPUT SHAFT			

(A) USED WITH 19 mm (3/4 in.) TINES
 (B) USED WITH 9.5 mm (3/8 in.), 12.7 mm (1/2 in.) OR
 15.9 mm (5/8 in.) TINES
 (C) 1000 Model
 (D) 1500 Model

Parts Needed in First 200 hours of Operation

Qty	Part No.	Item	Capacity	Interval In Hours
2	TY6296	JD GL-5 80W-90 Gear Lube - 1 qt	1.1 qt	50
3	TY6333	John Deere Moly High Temp EP Grease		8
Tines - See Tine Chart				